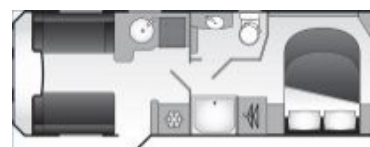
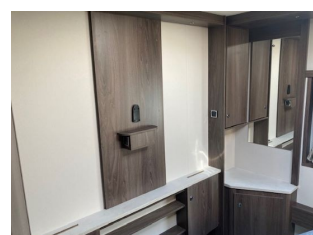
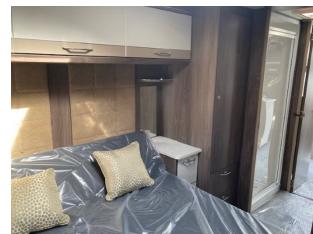




Stockbridge Road (A30)
Lopcombe, Salisbury
Wiltshire SP5 1BS
Tel: 01980 863636
sales@tilshead-caravans.com

Coachman Laser Xcel 850, 4 Berth, 2024

£41,995



Description

2024 Coachman Laser Xcel 850

Tilshead Caravans are pleased to offer this new and unregistered 2024 Coachman Laser Xcel 850 for sale. A 4 berth with a transverse island bed to give you an excellent night's sleep plus en-suite facilities in the form of a centre washroom. Packed with exclusive features, this really is a luxurious home-from-home.

This caravan is available to view at our Sales Centre located on the A30 between Salisbury and Stockbridge.

Bed Sizes

Front Offside Single 4' 11" x 2' 4"
& Front Nearside Single 4' 11" x 2' 4"
or Front Double 7' 2" x 4' 7"
Rear Double 6' 2" x 4' 6"

Dimensions

Internal Length 6265mm / 20' 7"
Overall Length 7895mm / 25' 11"
Overall Width 2440mm / 8' 0"
Overall Height 2675mm / 8' 9"

Technical Specifications

M.R.O. - 1769kg M.T.P.L.M. - 1929kg No of Berths - 4 Model Year - 2024 Awning Size - Please Ask

Features Include

• Please note library images are displayed, to give you a flavour of some of the features of this caravan range, but which may not show the actual vehicle layout. Key features include:

Laser Xcel features 8" wide automotive style, fully bonded aerodynamic body shell
100W roof-mounted solar panel
E & P hydraulic Self levelling system as standard
Exterior side walls in 'Silver Grey' finish with 'Silver Grey' exterior door
AL-KO Active Trailer Control (ATC) system and 2 x AL-KO secure wheel locks
40 litre onboard fresh water tank
Retractable island bed giving more freedom to walk around
Kitchen extractor fan and Midi rooflight in the kitchen
Flatbed ventilated microwave oven with co-ordinating flush fitting acrylic housing unit in 'Nebbia'
Thetford N4145 159 litre electronic fridge freezer
Kitchen splashback in 'Kaspio Oro' design with integrated smooth action mechanism Softrollo pleated blind with flyscreen
Domestic style flexible chrome and black kitchen tap
Full-width fixed panoramic roof window

Soft furnishings with higher and more supportive backrests, co-ordinating scatter cushions and sculptured armrests
LED touch sensitive dimmable under the surface and locker ambience enhancing lighting
Multi directional matt black LED reading spot lights with USB ports to all areas
Alde boiler with 5 year fluid, integrated pump and programmable LCD touch screen control panel
Mobile phone charging unit (integrated into the bulkhead) suitable for iPhone 8 & Samsung 7 and above
Luxurious deep pile stain resistant loose lay carpets

Please [Click Here for a Video Walkthrough of the 2024 Coachman Laser Xcel 850 caravan](#)

For more details of this model, including full specifications, please download a brochure on our [Downloads](#) page or contact us.

Should you be considering a purchase of this caravan model then please do speak to us on Tel. 01980 863636 and we would be happy to talk about your exact requirements and quote you accordingly. •