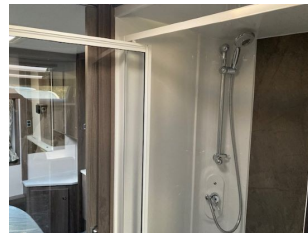




Stockbridge Road (A30)
Lopcombe, Salisbury
Wiltshire SP5 1BS
Tel: 01980 863636
sales@tilshead-caravans.com

Coachman Laser Xcel 855, 4 Berth, 2024

£47,735



Description

2024 Coachman Laser Xcel 855

Tilshead Caravans are pleased to offer this new and unregistered 2024 Coachman Laser Xcel 850 caravan for sale. Featuring a fantastic Coachman specification and colour scheme with a 3 year warranty and 10 year body integrity warranty.

The Laser Xcel 855 offers a private rear bedroom with central washroom. The L-shape front seating also provides for a lovely TV-wall on the nearside, making lounging comfortable and easy.

Bed Sizes

Front Double 6' 6" x 4' 6"
Rear Double 6' 2" x 4' 6"

Dimensions

Internal Length 6.265m / 20' 7"
Overall Length 7.895m / 25' 11"
Overall Width 2.44m / 8' 0"
Overall Height 2.65m / 8' 8"

Technical Specifications

M.R.O. - 1791kg M.T.P.L.M. - 1951kg No of Berths - 4 Model Year - 2023 Awning Size - Please Ask

Features Include

• Please note library images are displayed, to give you a flavour of some of the features of this caravan range, but which may not show the actual vehicle layout. Key features include:

Laser Xcel features 8" wide automotive style, fully bonded aerodynamic body shell

100W roof-mounted solar panel

E & P hydraulic Self levelling system as standard

Exterior side walls in 'Silver Grey' finish with 'Silver Grey' exterior door with **NEW** Exterior 3D graphics

AL-KO Active Trailer Control (ATC) system and 2 x AL-KO secure wheel locks

NEW 40 litre onboard fresh water tank

Kitchen extractor fan and Midi rooflight in the kitchen

NEW flatbed ventilated microwave oven with co-ordinating flush fitting acrylic housing unit in 'Nebbia'

NEW Thetford N4145 159 litre electronic fridge freezer

NEW kitchen splashback in 'Kaspio Oro' design with integrated smooth action mechanism Softrollo pleated blind with flyscreen

NEW domestic style flexible chrome and black kitchen tap

Full-width fixed panoramic roof window

NEW Soft furnishings with higher and more supportive backrests, co-ordinating scatter cushions and sculptured armrests

LED touch sensitive dimmable under the surface and locker ambience enhancing lighting
NEW multi directional matt black LED reading spot lights with USB ports to all areas
Alde boiler with 5 year fluid, integrated pump and programmable LCD touch screen control panel
Mobile phone charging unit (integrated into the bulkhead) suitable for iPhone 8 & Samsung 7 and above
Luxurious deep pile stain resistant loose lay carpets

Please [Click Here for a Video Walkthrough of the 2024 Coachman Laser Xcel 855 caravan](#)

Please [Click Here for an Interactive 'See-Inside' Tour of this caravan](#)

For more details of this model, including full specifications, please download a brochure on our [Downloads](#) page or contact us.

Price shown is Manufacturer RRP. Should you be considering a purchase of this caravan model then please do speak to us on Tel. 01980 863636 and we would be happy to talk about your exact requirements and quote you accordingly. •