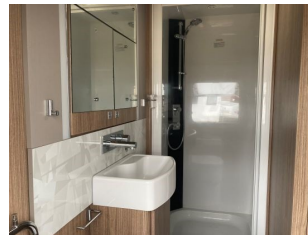




Stockbridge Road (A30)  
Lopcombe, Salisbury  
Wiltshire SP5 1BS  
Tel: 01980 863636  
sales@tilshead-caravans.com

## Coachman VIP 575, 4 Berth, 2018

# £21,995



### Description

This 2018 Coachman VIP 575 benefits from a private rear washroom with separate toilet and shower. A spacious front lounge that can be used as two short singles or converted into a large double bed.

Offering a high specification and Coachman build quality throughout, this caravan also has a fitted PowrTouch mover.

This caravan is available to view at our Sales Centre located on the A30 between Salisbury and Stockbridge.

### Bed Sizes

Front Offside Single	5' 0" x 2' 4"
Front Nearside Single	5' 0" x 2' 4"
Front Double	6' 9" x 4' 7"
Rear Double	6' 2" x 4' 5"

### Dimensions

Internal Length	5800mm / 19' 0"
Overall Length	7430mm / 24' 5"
Overall Width	2310mm / 7' 7"
Overall Height	2650mm / 8' 8"

### Technical Specifications

M.R.O. - 1499kg    M.T.P.L.M. - 1655kg    No of Berths - 4    Model Year - 2018    Awning Size - Please ask

### Features Include

- **FITTED:** PowrTouch motor mover
- Built using Coachman's ABC (Advanced Bonded Construction) where the body is glued rather than being screwed together
- AL-KO AKS 3004 Stabiliser and Active Trailer Control (ATC) system
- AL-KO secure wheel lock
- Remote control alarm system with PIR and tilt sensors for added security (fob controls the awning light)
- Alde wet central heating and hot water system with programmable LCD touch screen
- FENIX NTM® kitchen worktops (scratch resistant, thermally heals micro-scratches, hygienic and easy clean)
- Dometic dual fuel hob with electronic ignition, glass lid and flame failure device
- Roof mounted Solar Panel
- Flush fitting housing unit for 800W, 20 litre microwave oven
- Dometic oven and separate grill with chrome finish and improved efficiency
- LED under surface and locker ambience enhancing lighting
- soft furnishings in 'Durango/Strathmore' design with coordinating scatter cushions and sculptured armrests
- Whale Watermaster inlet point - intelligent control with high flow submersible pump
- Whale external gas BBQ point with Easi-Slide lid
- Whale 230 volt external mains socket

For more details of this model, including full specifications, please download a brochure on our [Downloads](#) page or contact us.

Should you be considering a purchase of this caravan model then please do speak to us on Tel. 01980 863636 and we would be happy to quote you and talk about your exact requirements. •