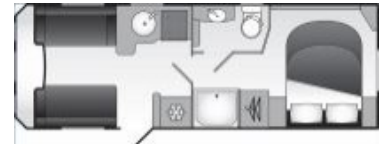
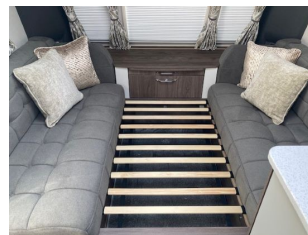




Stockbridge Road (A30)  
Lopcombe, Salisbury  
Wiltshire SP5 1BS  
Tel: 01980 863636  
sales@tilshead-caravans.com

## Coachman Laser Xcel 850, 4 Berth, 2024

# £46,745



### Description

2024 Coachman Laser Xcel 850

Tilshead Caravans are pleased to offer this new and unregistered 2024 Coachman Laser Xcel 850 for sale. A 4 berth with a transverse island bed to give you an excellent night's sleep plus en-suite facilities in the form of a centre washroom. Packed with exclusive features this really is a luxurious home-from-home.

This caravan is available to view at our Sales Centre located on the A30 between Salisbury and Stockbridge.

### Bed Sizes

Front Offside Single 4' 11" x 2' 4"  
& Front Nearside Single 4' 11" x 2' 4"  
or Front Double 7' 2" x 4' 7"  
Rear Double 6' 2" x 4' 6"

### Dimensions

Internal Length 6265mm / 20' 7"  
Overall Length 7895mm / 25' 11"  
Overall Width 2440mm / 8' 0"  
Overall Height 2675mm / 8' 9"

### Technical Specifications

M.R.O. - 1769kg M.T.P.L.M. - 1929kg No of Berths - 4 Model Year - 2024 Awning Size - Please Ask

### Features Include

• Please note library images are displayed, to give you a flavour of some of the features of this caravan range, but which may not show the actual vehicle layout. Key features include:

Laser Xcel features 8" wide automotive style, fully bonded aerodynamic body shell

100W roof-mounted solar panel

E & P hydraulic Self levelling system as standard

Exterior side walls in 'Silver Grey' finish with 'Silver Grey' exterior door with **NEW** Exterior 3D graphics

AL-KO Active Trailer Control (ATC) system and 2 x AL-KO secure wheel locks

**NEW** 40 litre onboard fresh water tank

Retractable island bed giving more freedom to walk around

Kitchen extractor fan and Midi rooflight in the kitchen

**NEW** flatbed ventilated microwave oven with co-ordinating flush fitting acrylic housing unit in 'Nebbia'

**NEW** Thetford N4145 159 litre electronic fridge freezer

**NEW** kitchen splashback in 'Kaspio Oro' design with integrated smooth action mechanism Softrollo pleated blind with flyscreen

**NEW** domestic style flexible chrome and black kitchen tap

Full-width fixed panoramic roof window

**NEW** Soft furnishings with higher and more supportive backrests, co-ordinating scatter cushions and sculptured armrests  
LED touch sensitive dimmable under the surface and locker ambience enhancing lighting  
**NEW** multi directional matt black LED reading spot lights with USB ports to all areas  
Alde boiler with 5 year fluid, integrated pump and programmable LCD touch screen control panel  
Mobile phone charging unit (integrated into the bulkhead) suitable for iPhone 8 & Samsung 7 and above  
Luxurious deep pile stain resistant loose lay carpets

Please [Click Here for a Video Walkthrough of the 2024 Coachman Laser Xcel 850 caravan](#)

Please [Click Here for an Interactive 'See-Inside' Tour of this caravan](#)

Price shown is Manufacturer RRP including Manufacturer Delivery Charge. For more details of this model, including full specifications, please download a brochure on our [Downloads](#) page or contact us. • •

**Should you be considering a purchase of this caravan model then please do visit us to see the caravan features first-hand or speak to us on Tel. 01980 863636**

**and we would be happy to quote you and talk about your exact requirements.**

• • • •